

XEROX[®]

Technology | Document Management | Consulting Services

Xerox WorkCentre Pro

416

MULTIFUNCTION SYSTEM

Overview

PRINT

EMAIL

COPY

FAX

INTERNET FAX



The office assistant
that works for you
and your bottom line



WorkCentre Pro 416Si
Multifunction System

The WorkCentre Pro 416 Series: it's never been so easy – or so affordable – to go digital.



To compete today, you need technology that supports you like a dedicated office assistant – one that works tirelessly for you and your bottom line. *That's what the WorkCentre Pro 416 Series is all about.*

It's also about giving your office workers the tools they need to get work done reliably, productively and with exceptional quality. It's about giving you an affordable entry into the digital world. It's about saving you money.

But most of all, the WorkCentre Pro 416 Series is all about value – making sure you have the right office document technology with the right features at the right price.

With multiple configurations, the WorkCentre Pro 416 Series offers the functionality your office needs.

WorkCentre Pro 416E Copier



WorkCentre Pro 416DE Copier



Digital copying – raise your expectations.

When you need to copy, you have access to digital features that truly make a difference in productivity and document appearance.

- The Scan-once-print-many feature saves time by eliminating the re-circulation of documents through the Automatic Document Handler.
- Electronic Collation eliminates the need for manual sorting.

- Improve productivity with auto tray switching. When the WorkCentre Pro 416 runs out of paper in one tray, it automatically switches to another tray loaded with the same paper.
- Booklet Mode lets you create finished booklets with a press of a button.
- **Every WorkCentre Pro 416 digital copier is also a printer**, thanks to the Direct Print feature. Just connect a workstation to the 416 copier via a standard parallel port, and you're ready to start printing.

print

Network printing – get connected.

Network printing is critical in today's connected office environment. With the WorkCentre Pro 416, everyone in your office has convenient access to high quality, productive PCL and PostScript® printing.

- Capabilities like two-sided printing and offset stacking improve productivity while reducing paper waste.
- Xerox CentreWare®, a Web-based printer management tool, allows simple point-and-click printer installation and configuration. Its remote device administration tool provides up-to-the-minute machine and job status, which maximises machine uptime and improves worker satisfaction.

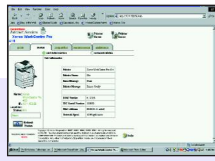
copy



WorkCentre Pro 416Pi Duplex Printer-Copier

Xerox WorkCentre Pro 416

MULTIFUNCTION SYSTEM



Remote Administration

Web-based installation and configuration of the WorkCentre Pro 416 on your network



Network Printing

Information can be shared efficiently via the Internet and Intranet



Internet Printing Protocol

Submit documents to be printed via the Internet when you're off-site (software requirements apply)



Copy

Sharp, crisp digital image quality at 600 x 600 dpi.



Phone Fax

High quality walk-up faxing



A convenience stapler and Offset Catch Tray add to the multifunction configuration's productivity



Scan-to-email

Hardcopy can easily be scanned to email and distributed to workgroups



Internet Fax

Reduce costs by faxing and scanning via the Internet

WorkCentre Pro 416Si
Multifunction System

Full multifunction – for all the different ways you work.

Every day, you make copies. You print. You email. You fax. *Isn't it nice to know there's a Xerox digital multifunction system that does, too?*

Now all your digital copying, printing, faxing and scanning requirements are satisfied by a single, affordable solution.

- Consolidating multiple devices into a single Xerox WorkCentre Pro 416Si means lower operating expenses, greater reliability and uptime, and elimination of redundant service and supply costs.
- *Scan-to-email* scans documents to your PC and distributes them via email. Simply load the document, enter the email address manually or with pre-set keys and press Start.

fax

- ScanSoft®'s award winning document management software, PaperPort® and TextBridge®, offer the ability to customise and distribute scanned documents.
- *Phone Faxing* is easier than ever. The 416Si offers standard features that boost fax productivity such as group codes and one touch keys.
- Fax documents as fast as email and never get a busy signal. *Internet Faxing* increases productivity, decreases transmission time and eliminates long distance phone charges.

email

For more information on how the Xerox WorkCentre Pro 416 can help increase your office productivity, contact your Xerox Representative or visit our Web site at www.xerox.com



Xerox WorkCentre Pro 416

MULTIFUNCTION SYSTEM

Specifications

Configurations

WorkCentre Pro 416E: Simplex platen copier with single 550 sheet tray, bypass tray and stand.

WorkCentre Pro 416DE: Simplex copier with automatic document handler, single 550 sheet tray, bypass tray and stand.

WorkCentre Pro 416Pi: Duplex printer-copier with duplex automatic document handler, three 550 sheet trays, bypass tray, offset catch tray and stand.

WorkCentre Pro 416Si: Duplex printer/copier/ fax/Internet fax/scan-to-email with duplex automatic document handler, three 550 sheet trays, bypass tray, offset catch tray, stand and convenience stapler.

Printer Specifications

Technology	Black and White Laser
Speed	16 ppm
Resolution	1200 x 600 dpi with Edge Enhancement Technology
Two-Sided	Yes (416Pi & 416Si only)
Page Description Languages (PDL)	PCL6 (PCL 5e, PCL XL), PostScript 2 (emulation)
Print Drivers	Win 95/98/NT 4.0/2000/ME/XP 1-999
Multiple Prints	80 MB
Print Memory	10/100 BaseT
Connectivity	TCP/IP, IPX, IPP, DHCP, LPR, SNMP, HTTP, Rawport 9100
Network Protocols	
Network Operating Systems	Novell NetWare 4.11, 4.2, 5.x Windows NT 4.0, Windows 2000, IBM LAN Server 3.0, 4.0 (TCP/IP)
Printer Management Software	Xerox CentreWare DP (Novell NetWare 3.x, 4.0, 5.0), NDPS, Microsoft Management Console, Web-Based/Internet Printing Support
Printing Features	Electronic Pre-Collation/Sorting, Different First Page, Separator Page, Watermarks and N-up

Scan-to-email Specifications

Technology	Network Scan-to-email
Scan Resolution	200 x 100 dpi, 200 x 200 dpi, 200 x 400 dpi & 400 x 400 dpi
Grayscale Depth	256
File Format	TIFF-FX
Preset Email Keys	382
Max Original	A3

Bundled Software

PaperPort® Deluxe 7.0
TextBridge® Pro Millennium Business Edition

Copier Specifications

Speed	16 ppm (A4/210 x 297 mm) 11 ppm (B4/250 x 353 mm) 9 ppm (A3/297 x 420 mm)
Resolution	600 x 600 dpi
First Copy Out	Less than 8 seconds
Two-Sided	Yes (416Pi & 416Si only)
Reduce/Enlarge Settings Levels	Auto plus 5 pre-programmed 50% to 200% in 1% steps
Productivity	Scan Once Print Many, Electronic Pre-Collation
Copy Memory	32 MB standard, 160 maximum
Multiple Copies	1-999
Image Controls	Text, Text/Photo, Photo, Toner Saver
Edge Deletion	4 mm
Auto Original Size Detection	No for platen, Yes for ADH and DADH
Digital Copying Features	Edge Erase, Build Job, Bound Original, Two-Up, Job Store, Annotation, Image Shift and Booklet Mode (416Pi & Si only, extra memory required)

Direct connect printing available on copier configurations only

Fax and Internet Fax Specifications

Fax Transmission Speed	1.4 seconds per page
Modem Speed	33.6 k bps
Data Compression	JBIG, MMR, MR, MH
Internet Fax Scan	
Internet Fax and Scan Resolution	200 x 100 dpi, 200 x 200 dpi, 200 x 400 dpi & 400 x 400 dpi
Fax Scan Resolution	
Settings	STD, Fine, Superfine
Fax Memory	5.5 MB
Dialing	
Speed Dial	300
One Touch Dial	82
Group Dial	50
Fax Features	Auto Reduction, Optional Transmission Header

Media Handling

Input Paper Capacity	
Standard Trays	550 sheets
Bypass Tray	100 sheets
Paper Size	A3 to A5/297 x 420 mm to 148 x 210 mm
Paper Weight	
Standard Trays	60 to 90 gsm
Bypass Tray	60 to 163 gsm
Document Handler	
Simplex	50 sheets (80 gsm)
Duplex	100 sheets (80 gsm)
Output Capacity	
Centre Tray	500 sheets (416E & DE only)
Offset Catch Tray	250 sheets (416Pi & Si only)
Finishing	
Convenience Stapler	Yes (416Si only)

General

Dimensions (WxDxH)	801 x 577 x 1168 mm
Weight	98.5 kg
Power	220-240V, 50 Hz, 5.6 amps
Power Consumption (Average)	
Run	600 watts
Standby	130 watts
Energy Saver Mode	9.5 watts
Operating Environment	
Temperature and Humidity	
Maximum Range	10° to 29°C @ 80% RH/ 50° to 84°F @ 80% RH 10° to 33°C @ 60% RH/ 50° to 92°F @ 60% RH
Recommended Range	15° to 25°C @ 70% RH/ 59° to 77°F @ 70% RH

Supplies

Approximate Yield	
Toner Cartridge	5,000 pages @ 6%* document coverage
Drum Cartridge	27,000 pages
Staple Cartridge	5,000 staples

*Starter cartridge (416E only) yield 2,000 prints @ 6%.

Agency Approvals

Safety	TUV (GSMARK), IEC60950 (CB) (EN60950) IEC60825 (EN60825).
---------------	---

Options

Copy Memory	2 x 64 MB upgrade 160 MB (maximum)
--------------------	---------------------------------------

For more information, please visit our Web site or call:

United Kingdom & Eire
Tel: 00 800 9000 9090



Configuration availability may vary by location.

© 2002 Xerox Corporation. Xerox®, The Document Company®, the digital X® and WorkCentre® are trademarks of XEROX CORPORATION. In support of Xerox's environmental leadership goals, the Xerox WorkCentre Pro 416 may contain some recycled components that are reconditioned. Windows, Windows NT and Windows 2000 are trademarks of Microsoft Corporation. PostScript® is a trademark of Adobe Systems, Inc. Novell® and NetWare are trademarks of Novell Corporation. PaperPort® and TextBridge® are registered trademarks of ScanSoft, Inc. Whilst this information is correct at the time of going to press, Xerox Europe reserves the right to change specifications of the equipment described herein without notice. 01/05

41XBR-01EC